

Historic, Archive Document

Do not assume content reflects current scientific knowledge, policies, or practices.

62.43

1946



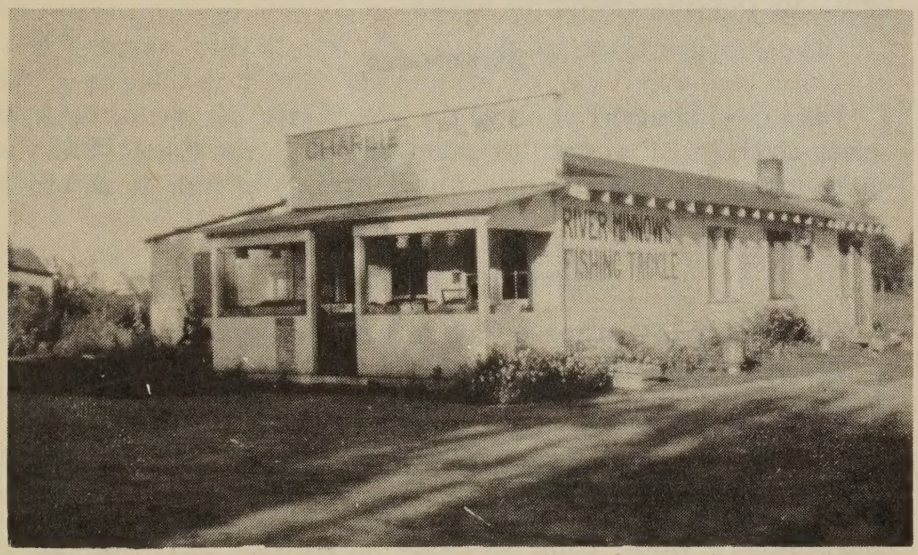
A New Strawberry

REGISTERED
from JAN 25 1946
U S Department of Agriculture

Charlie's Place

(CHAS. BRUNES)

PEQUOT LAKES, MINNESOTA



Where thousands of quarts of berries are sold each season to our tourist trade. Chas. Brunès of Charlie's Place, Highway 371, Pequot Lakes, Minn.



HOME OF

"Brunès Marvel"

STRAWBERRIES

Large . . Sweet . . Lucious
Early . . Hardy . . Prolific
Lots of Runners

The Everbearer You Want

"Brunes Marvels" Are Excellent

Eight years ago I began experimenting to see if it were possible to get an everbearing strawberry as large as the Gem or Mastadon and as sweet as the Wayzata, one that would set runners freely. Today we have several acres of such a berry.

The Berries Are Large

Yes, they are as large as the Wayzata and Gem and ripen even all over the berry; no green tips or part green and part ripe. A profitable berry to raise.

Early Ripening

The first berry to get ripe on our place, and goes to work about 60 days after setting out plants.

It doesn't take long to stem a quart of "Brunes Marvel" as they are free-stem; no core left in the berry. Think what this means to the busy housewife getting berries ready to serve.

Sweetness

"Brunes Marvel" is truly a lump of sweetness, and saving of sugar in canning and serving. They take only half the sugar for canning, which is a big saving.

Keeping Qualities

Far ahead of other everbearers we have raised.

Many nurseries and growers have sent us very good reports on this berry.

Stand Dry Weather Better

They go down for moisture, as the roots are exceptionally long. One we dug measured 23½ inches.

Heavy Foliage for Protection

Foliage is heavy enough on our new berry that it helps protect the berries from sunscald and frost.

Get started on this grand new everbearer . . it will pay you.

The "Brunes Marvel" Is Different

Often we have our customers come up to our berry stand and say, "Wish I could eat strawberries." We ask them to try our new berry, and those that do, come for more and say, "these berries didn't cause me any pain!" We have several of our tourist customers who haven't been able to eat strawberries for years. Queer as it seems, they can eat their fill of the "Brunes Marvel" without distress.

Less Acid . . Sweeter . . They Need Less

for Preserves and for Freezing

To Whom It May Concern:

For years I have been unable to eat any strawberries because the acid in them caused pain and much distress. Last summer (1940) Mr. Chas. Brunes of Pequot Lakes, Minn., asked me to sample a strawberry he had himself produced from seed. Very much to my surprise and delight I found this particular berry agreed with me and since then I have eaten all I wanted without distress. The berry Mr. Brunes has developed a large sweet strawberry, everbearing, and is almost or entirely free from acid, and I highly recommend it.

(Summer address:
Pequot Lakes, Minn.)

MRS. E. M. KENNEY,
1822 6th Ave.,
Des Moines, Ia.

Preferred by Customers

We have raised all the leading everbearers and have sold thousands of quarts of all varieties each season to our tourist trade at our roadside stand here at Pequot Lakes. We now raise most "Brunes Marvel" as our customers prefer them to other varieties. I am still trying to raise other new strawberries and have several very promising plants in our testing rows

Our Fourth Season With "Brunes Marvels"

This is the fourth season we are offering this new berry plant for sale, and it has been sold by us and shipped to 37 States and Canada so far. It is as early as any strawberry we have ever raised.

We have a nice lot of "Brunes Marvel" plants this year, but the demand for them is greater now, so please order early. We reserve the right to return your money when plants are sold out.

It is usually April 15 before we can dig plants here.

Growing Instructions

Plant strawberries as early in the spring as the ground can be worked. Start cultivating and hoeing as soon as planted. Cultivate all summer and keep weeds out. If possible water them in EVENING in dry weather. Have rows 3 to 4 feet apart and plant 18 to 20 inches in the row. Keep bud clusters picked off from 6 to 7 weeks after planting, then let them bear the rest of the summer. Keep most of the runners off if only berries are wanted.

\$ Sugar for Eating Fresh and for Canning



Hoing Strawberries on the Bruner Berry Farm

PRICES ON "BRUNES MARVEL" PLANTS

25	50 or less	-----	10c each
50	75 plants	-----	8c each
	100 to 500	-----	\$7.00 per 100
		-----	\$50.00 per 1000

Handwritten notes: 25, 50, 75, 100, 500, 3.50, 5.00, \$40.00

One-third cash with order

We have a few thousand Minnesota 1166 or Evermore everbearing strawberry plants for sale at the same price as "Brunes Marvel".

Care of Plants

When the plants arrive cut the string around them, dip the roots in water and heel them in the ground until you are ready to set them out. Sandy loam is best for strawberries, but reports have come to us that "Brunes Marvel" is doing well on a variety of soils in several states.

GUARANTEE

We guarantee every plant sold by us to be free from any injurious diseases or insects and true to name, and will replace any plants that are otherwise. It is agreed between ourselves and our customers that we shall not be liable for a greater sum than the amount paid us for plants, and will not be responsible for crop failure or damage by weather, etc. We reserve the right to return money in case of shortage of plants.

Reference:

Farmers State Bank, Pequot Lakes, Minn.

Chas. Bruner
Pequot Lakes *Minnesota*